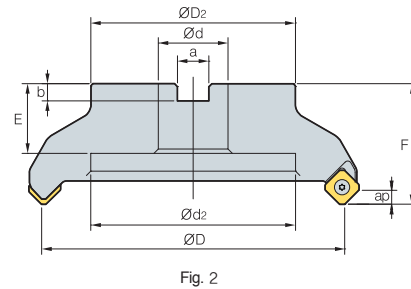
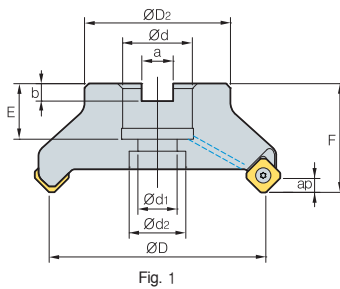
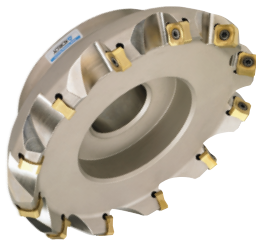


RM8AC(M)5000



AA
45°

• AR: -6°
• RR: -9°~-6°

(mm)

Designation	⊙	ØD	ØD2	Ød	Ød1	Ød2	a	b	E	F	ap		Fig.	
RM8AC (RM8ACM)	5080HR-M	6	80	57	25.4 (27)	14	20	9.5 (12.4)	6 (7)	25 (23)	50	7.5	1.2	1
	5100HR-M	7	100	67	31.75 (32)	18	26	12.7 (14.4)	8.0	33 (25)	63 (50)	7.5	2.5 (1.8)	1
	5125HR-M	8	125	87	38.1 (40)	22	32	15.9 (16.4)	10 (9)	35 (30)	63	7.5	3.6	1
	5160R-M	10	160	107	50.8 (40)	-	107	19 (16.4)	11 (9)	38 (32)	63	7.5	5 (4.56)	2
	5200R-M	12	200	130	47.625 (60)	-	135	25.4 (25.7)	14.0	38	63	7.5	7.1 (6.8)	2
	5250R-M	15	250	180	47.625 (60)	-	180	25.4 (25.7)	14.0	38	63	7.5	11.9 (10.6)	2
	5315R-M	20	315	240	47.625 (60)	-	238	25.4 (25.7)	14.0	38	63	7.5	19.1 (18.9)	2
	5400R-M	28	400	260	47.625 (60)	-	238	25.4 (25.7)	14.0	38	80	7.5	37.7 (37.5)	2

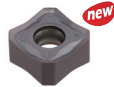
() Metric size

Available inserts

SNM(E)X-MF

SNEX-ML

SNM(E)X-MM



Designation	Cermet		Coated											Uncoated			page			
	CN2000	CN30	NCM325	NC5330	NCM535	NCM545	PC2505	PC2010	PC3600	PC3700	PC6510	PC9530	PC9540	PC5300	PC5400	ST30A		G10	H01	
SNEX	1507ANN-MF										●									
	1507ANN-ML																			E22
	1507ANN-MM										●									E23
SNMX	1507ANN-MF				●				●	●	●				●	●				E24
	1507ANN-MM				●				●	●	●				●	●				

Available arbors

Designation	Available arbors		
	RM8AC	RM8ACM	
RM8AC	5080HR-□	BT□□-FMA25.4-□□	BT□□-FMC27-□□
(RM8ACM)	5100HR-□	BT□□-FMA31.75-□□	BT□□-FMC32-□□
	5125HR-□	BT□□-FMA38.1-□□	BT□□-FMB40-□□
	5160R-□	BT□□-FMA50.8-□□	BT□□-FMC40-□□
	5200R-□		
	5250R-□		
	5315R-□	BT□□-FMA47.625-□□	BT□□-FMB60-□□
	5400R-□		

Parts

Specification		
Ø80-Ø400	FTGA0513	TW20-100

Available inserts E22~E24

Available arbors and bolt E400~E402